



Columbia Pike Community Progress Makers Program Committee

LMI from the Report:
"Assessing Alexandria/Arlington's Regional Labor Market"
by
Dr. Mark White , George Mason University's Center for Regional Analysis



Alexandria/Arlington Regional Workforce Council

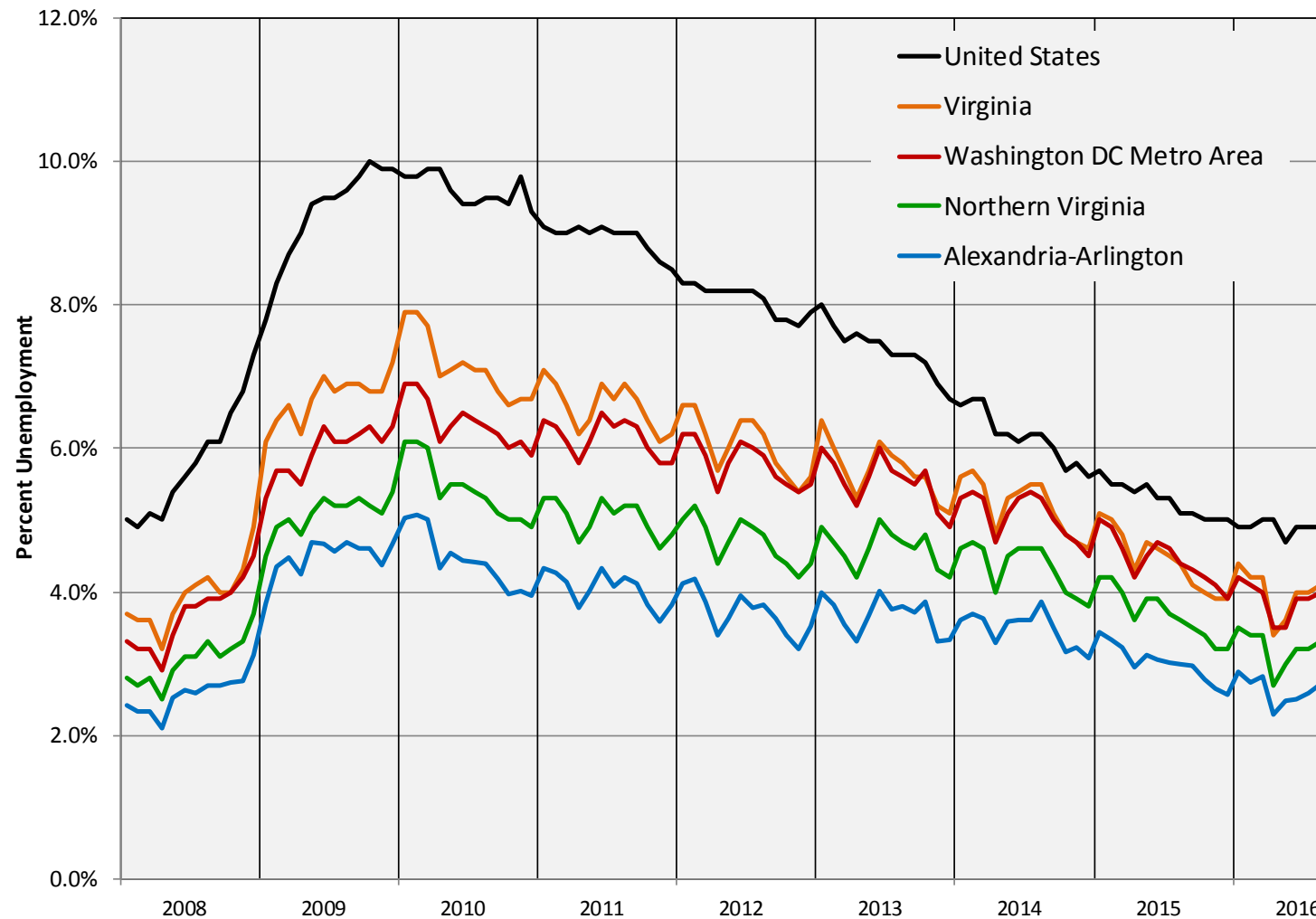




The Labor Force

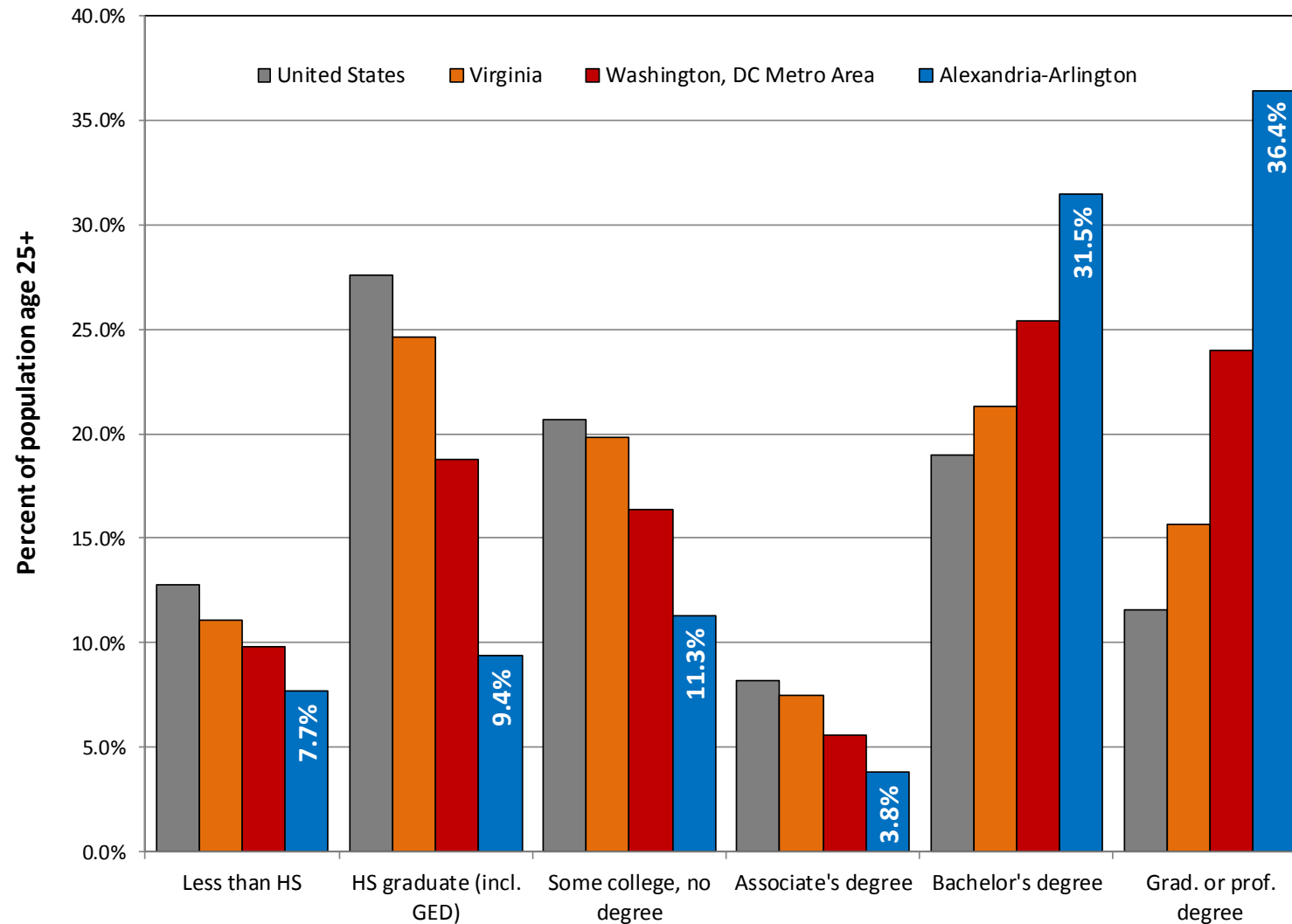


Unemployment remains lower than the region, state & nation



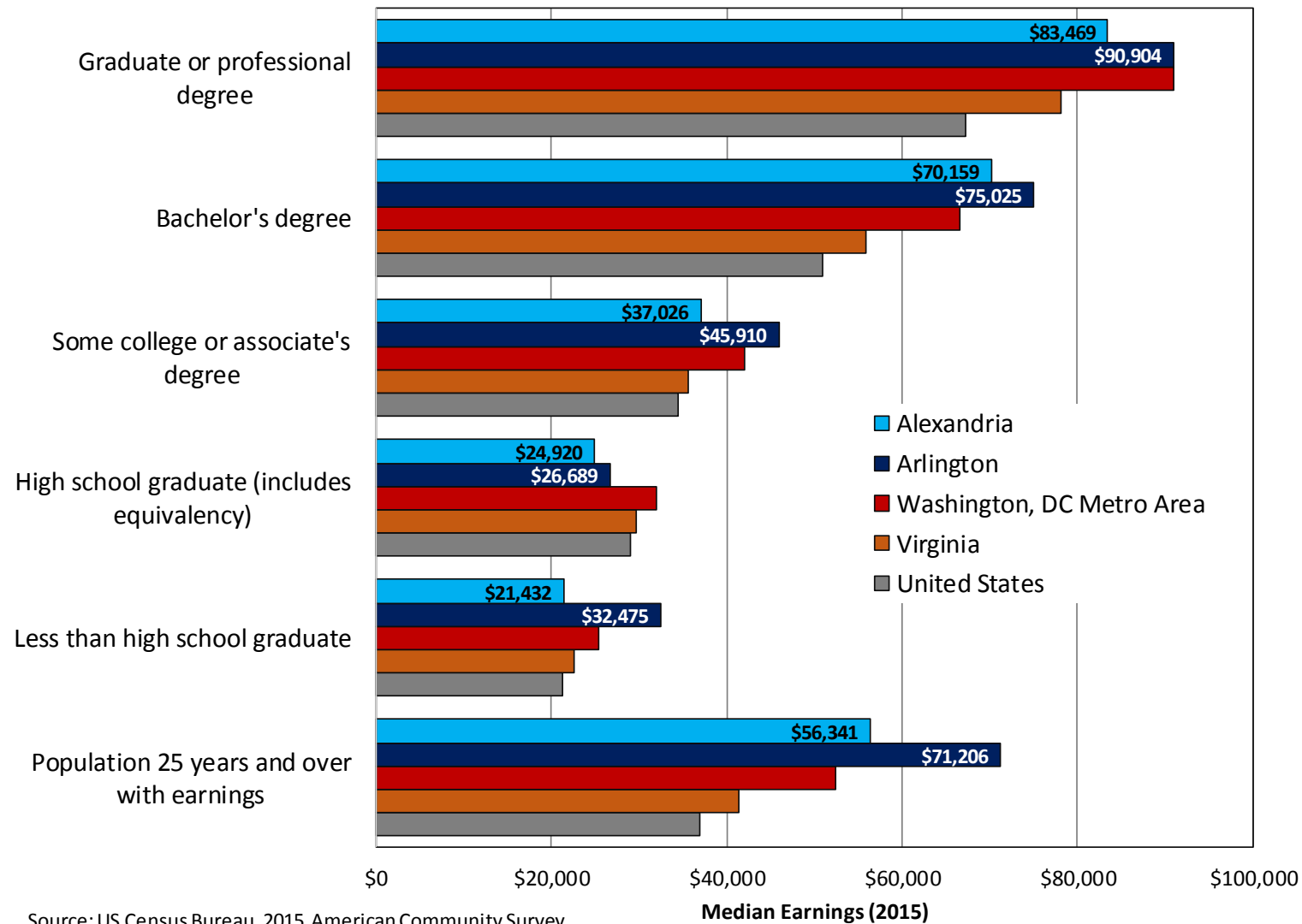
Source: US Bureau of Labor Statistics, Local Area Unemployment Statistics

2 out of 3 A-A residents (age 25+) have at least a 4-year degree



Source: US Census Bureau, 2015 American Community Survey

Earnings and education go hand in hand

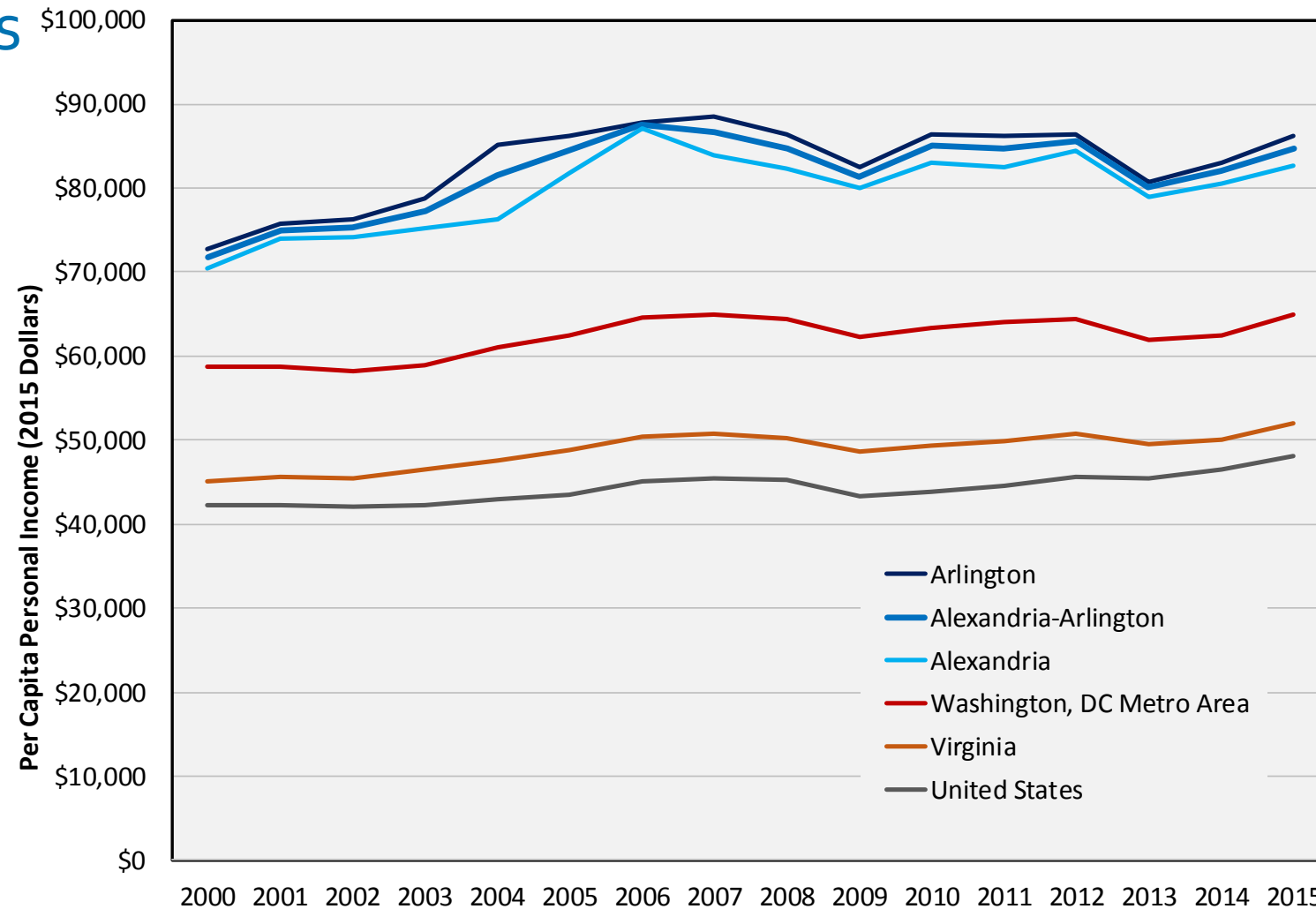




Economic Trends

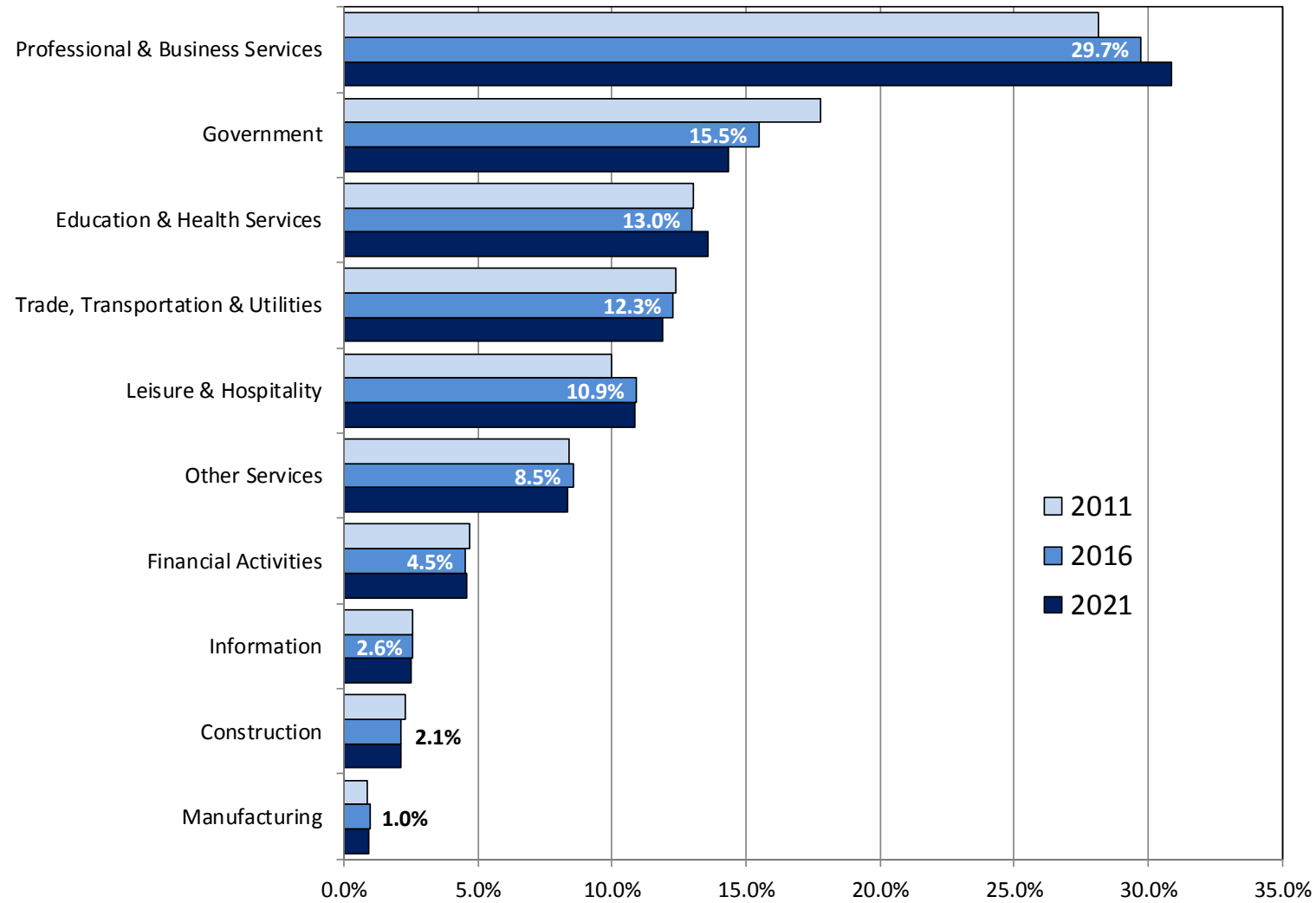


Arlington (#26) & Alexandria (#30) are two of America's wealthiest counties



Source: US Bureau of Economic Analysis, Adjusted for inflation using Bureau of Labor Statistics (BLS) Consumer Price Index

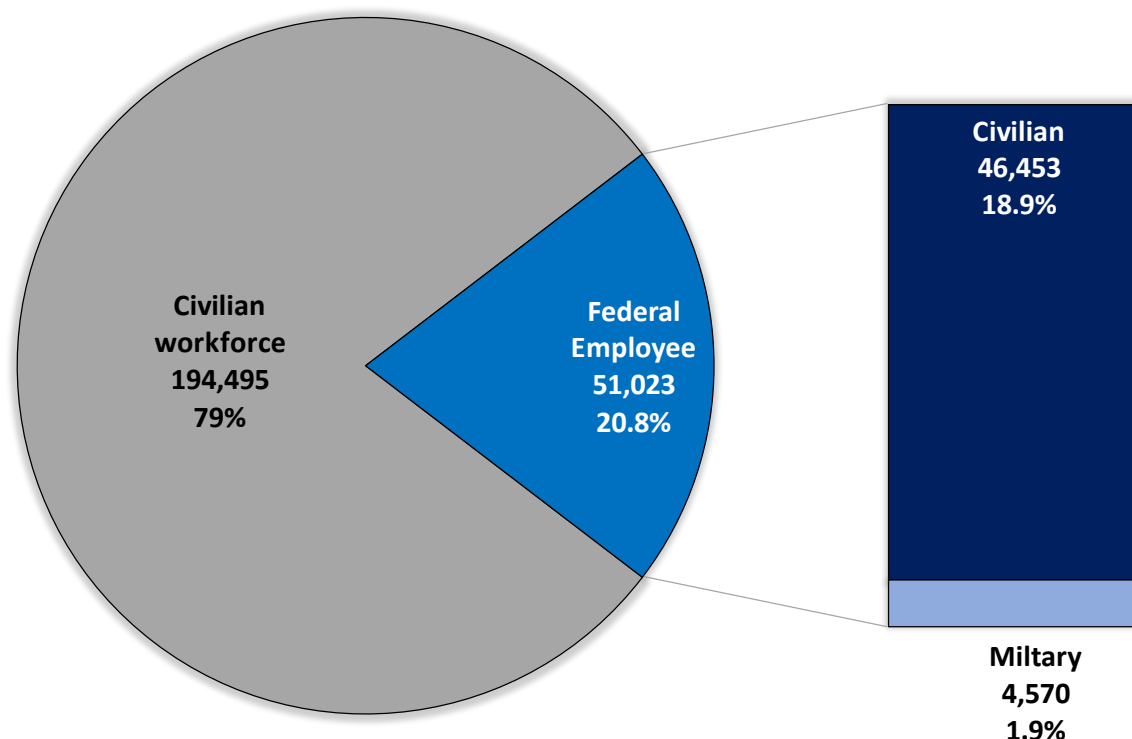
Prof. and business services account for almost 30% of total employment



Source: Chmura Economics, Jobs EQ

Percent of Total Employment

Roughly 1 in 5 workers living in Alexandria and Arlington work for the Federal Government



Source: US Census Bureau, 2015 ACS PUMS

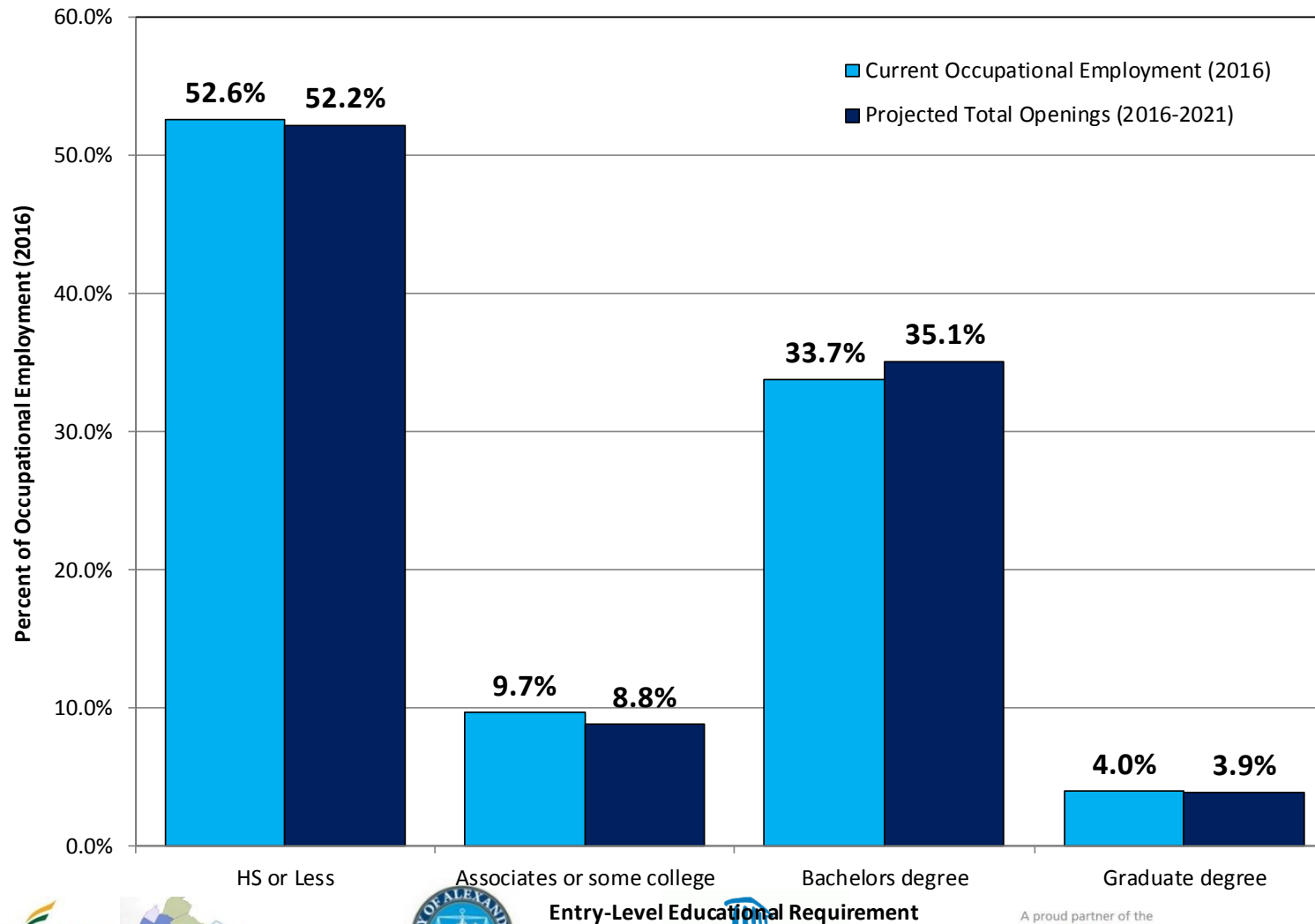
- **Arlington:**
 - **30,000** workers (21%)
 - **25,700** households (25%)
- **Alexandria**
 - **21,000** workers (21%)
 - **17,900** households (26%)



Sources of Workforce Demand



A-A has a polarized workforce with relatively few middle-skill jobs



Healthcare and business services are more average paying industries

- Growing industries
 - Healthcare: Dentists offices, outpatient care centers, medical and diagnostic labs
 - Business services: Advertising, PR, and related services; Accounting, tax prep, bookkeeping and payroll services
 - Transport: Transit systems, air transportation
- Middle-skill occupations
 - IT-related
 - Computer-user support specialists, web developers
 - Healthcare
 - Nursing assistants, LPNs, medical and dental assistants
 - Office support
 - Paralegals and legal assistants, bookkeeping, accounting and auditing clerks
 - Maintenance
 - Auto service techs, aircraft mechanics & techs,

Hospitality and personal services provide important opportunities for lower-wage workers

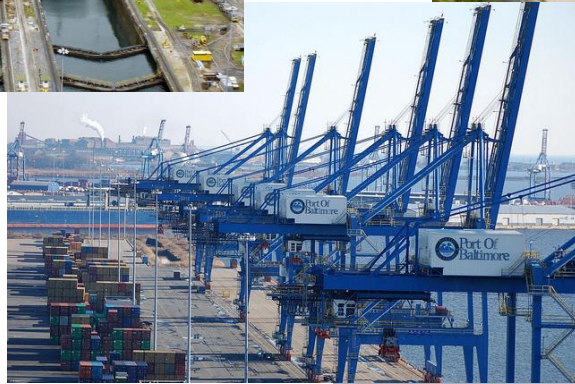
- Industries

- Restaurants
- Travel accommodation
- Continued care facilities
- Personal care services
- Grocery stores
- Services to buildings and dwellings
- Employment services

- Occupations

- Janitors & cleaners, maids and housekeepers
- Waiters & waitresses
- Restaurant cooks, food prep workers
- Cashiers, sales reps, customer service representatives

Outlook: Transportation



- By 2022, overall transportation job demand will grow by 14% in the DC Metro.
- Most entry-level positions require HS Diploma/GED and demonstration of math/language proficiency. But extensive training is required to move up.
- Examples of Entry Level Jobs (>\$30k/yr.): Delivery Driver & Car Detailer.
- Examples of Mid-Income Jobs (\$30k - \$49k): Class A CDL Truck Driver & Owner-Operator.

Outlook: Hospitality



- Hospitality will add 40,632 net jobs to the DC Metro labor market by 2022.
- Food Preparation and Serving Related Occupations account for 40% of total job openings in the next decade.
- Most entry-level positions require HS Diploma/GED and demonstration of math/language proficiency. Training is required to move up.
- Examples of Entry Level Jobs (>\$30k/yr.): Dishwasher, House Keeper, and Server/Hosts.
- Examples of Mid-Income Jobs (\$30k - \$49k): Restaurant Assistant Manager, Assistant Front Office Manager, Line Cook, & Housekeeping Supervisor.

Outlook: Retail



- Between 2009 – 2014, retail employment has grown by 14%.
- Most entry-level positions require less than a HS Diploma/GED and demonstration of math/language proficiency. Training is required to move up.
- 6,320 retail jobs available in the DC Metro today. 15% of the openings require a Bachelor's Degree.
- Examples of Entry Level Jobs (>\$30k/yr.): Retail Sales Associate, Merchandiser, Customer Service Representative, & Grocery Stock Clerk.
- Examples of Mid-Income Jobs (\$30k - \$49k): Assistant Store Manager.

In-demand IT/IS Opportunities in NVA

Occupational Code (SOC)	Occupation Name	Typical Entry Level Education	Top Related Certifications/ Competencies	2016 Total Employed	Projected Total Job Openings 2016-21	Median Hourly Earnings
15-1151	Computer Support Specialists	High School Diploma, Some Post-Secondary, A.A. Degree	A+, Network+, CCNA, Security+, Microsoft Technology Associate, IT Infrastructure	10,155	2,418	\$28.27
15-1152	Computer Network Support Specialists	High School Diploma, Some Post-Secondary, A.A. Degree	MCSA: Windows Server 2012	4,132	586	\$37.14
15-1142	Network and Computer System Administrators	B.A. Degree	Python Programming, Java SE8 Programming	10,663	1,618	\$47.83
15-1131	Computer Programmers	B.A. Degree	Java SE8 Programming, Python Programming	5,444	1,556	\$45.45
15-1132	Software Developers, Applications	B.A. Degree	CEH, CISSP, Security+	25,130	5,091	\$54.39
15-1133	Software Developers, Systems Software	B.A. Degree	Project Management	18,405	3,373	\$54.48
15-1122	Information Security Analysts	B.A. Degree	A+, Network+, CCNA, Security+, Microsoft Technology Associate, IT Infrastructure	7,372	1,614	\$53.11
11-3021	Computer/Information Systems Managers	B.A. Degree	MCSA: Windows Server 2012	5,632	1,462	\$75.63
TOTALS				86,933	17,718	

Arlington's Workforce Development System



Publicly Funded Providers

Partner	Services Provided
Arlington Employment Center	<ul style="list-style-type: none"> • Virginia Initiative for Employment Not Welfare (VIEW) • Supplemental Nutrient Assistance Program Employment and Training (SNAPET) • HUD Community Development Block Grant
Virginia Employment Commission	<ul style="list-style-type: none"> • Unemployment Compensation • Veterans Employment and Training • Rapid Response Activities
Virginia Department for Aging and Rehabilitative Services	<ul style="list-style-type: none"> • Disability Employment Services
National Council on Aging, Washington	<ul style="list-style-type: none"> • Older Worker Employment Services
Arlington Public Schools	<ul style="list-style-type: none"> • Adult & Career and Technical Education Programs
Northern Virginia Community College	<ul style="list-style-type: none"> • Career and Technical Education Programs

Private Workforce Development Organizations

Partner	Services Provided
La Cocina	<ul style="list-style-type: none"> Culinary Employment Training Program
Goodwill of Greater Washington (Glebe Rd. Location)	<ul style="list-style-type: none"> Security & Protective Services Training Program Hospitality Training Program
EduWorkforce Training and Consulting Inc.	<ul style="list-style-type: none"> Child Development Associate Training Program
Global Educational Institute	<ul style="list-style-type: none"> Nursing Assistant Training Program Home Health Aide Training Program
The Institute for Statistics Education	<ul style="list-style-type: none"> Various Training Programs

Arlington Employment Center: Basic Career Services

- Client intake, and orientation to Virginia workforce system services
- Initial needs assessment and evaluation of work history and educational attainment
- Labor exchange services, such as job search and job placement assistance
- Basic job search assistance, including resume writing and interview skills
- Information on available supportive services
- Staff-supported assistance in resource center
- Referrals to other programs and services available through the workforce development system

Arlington Employment Center: Individual Career Services

- Comprehensive and specialized assessments of skill levels and service needs
- Development of an individual employment plan and information on available training and training providers
- Assistance in establishing eligibility on non-WIOA financial aid for employment and training programs
- Career planning
- Short-term pre-vocational services including development of learning skills, communication skills, interviewing skills, punctuality, personal maintenance skills, and professional conduct services to prepare individuals for unsubsidized employment or training
- Financial literacy services
- English language acquisition and integrated education and training programs

Arlington Employment Center: Business Services

- Provide access to labor market information
- Use of American Job Center facilities for recruiting and interviewing job applicants
- Post job vacancies
- Provide information and services related to Unemployment Insurance taxes and claims
- Conduct on-site Rapid Response activities regarding closures and downsizings
- Conduct job fairs
- Take and fill job orders
- Assist with disability accommodations
- Develop On-the-Job Training and incumbent worker contracts

Ongoing Workforce Development Challenges

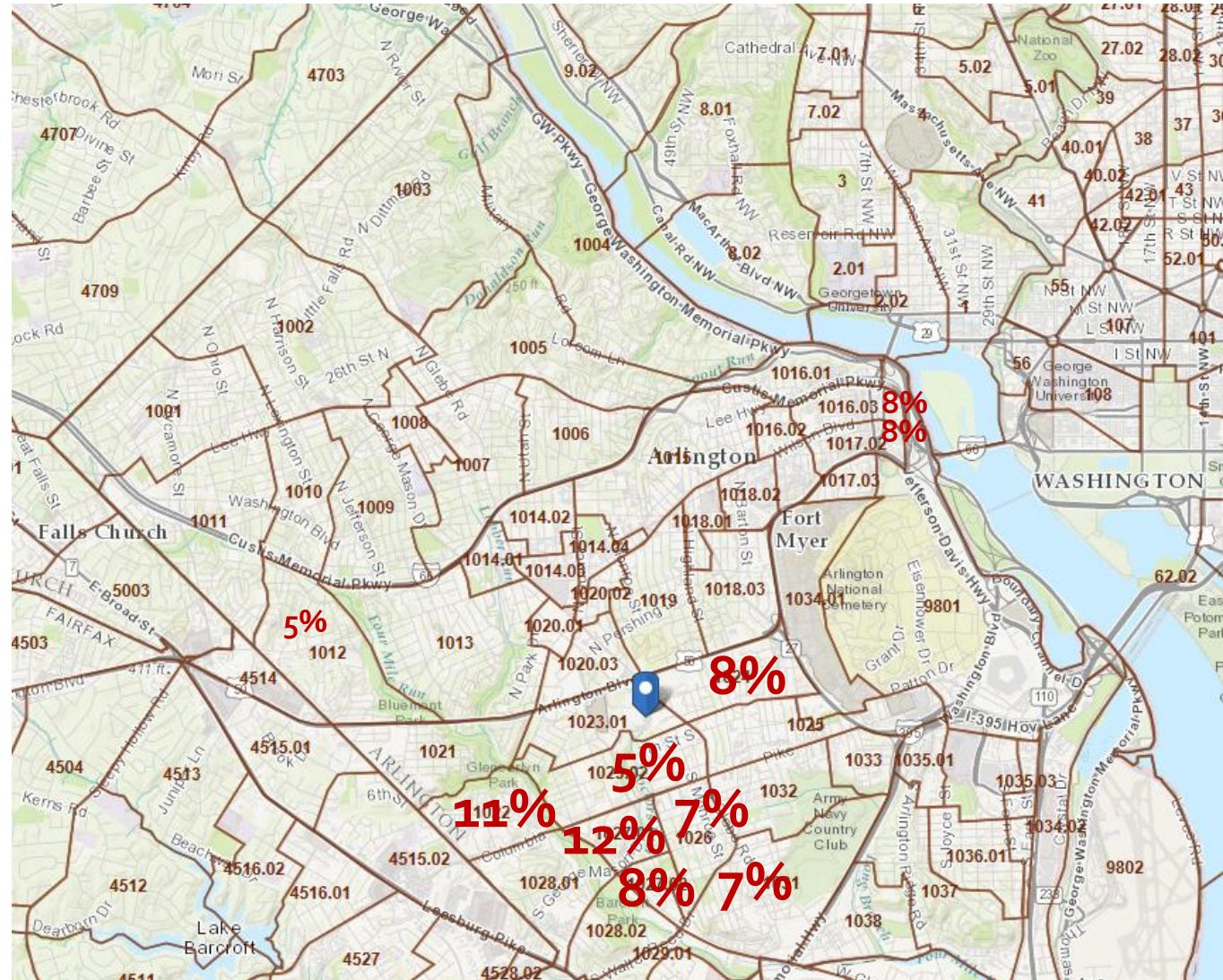


Essential Professional Skillsets In Short Supply

<u>Name</u>	<u>Job Openings</u>
Oral and written communication skills	69,360
Microsoft Office	29,064
Detail oriented	23,642
Integrity	22,612
Marketing	21,177
Creativity	20,237
Problem solving	18,542
Project Management	17,807
Customer service oriented	17,688
Work independently	17,604
Team-oriented, teamwork	17,077
Microsoft PowerPoint	16,954
Self-starting / Self-motivated	15,833
Troubleshooting	14,686
Organizational skills	14,185
Management skills	13,380
Software development	13,000
Management experience	12,980
Oracle	12,829
Java	11,904

<u>Name</u>	<u>Job Openings</u>
Linux	11,894
Coaching	11,549
Strong leadership skills	10,744
Quality Assurance	10,594
Analytical skills	10,146
Structured query language	10,000
Program management	9,655
Business development	9,473
Time management	9,380
Cyber security	8,535
Strong interpersonal skills	8,529
Technical support	8,065
Risk Management	7,824
JavaScript	7,769
UNIX	7,345
Sales experience / ability	7,290
Systems Development Life Cycle	7,257
Business process modeling	7,116
Microsoft SharePoint	7,005
Microsoft Word	6,760

Areas of high unemployment: Arlington County





Thank You!

David Remick
Executive Director
703.228.1412
dremick@arlingtonva.us

