



# **LABOR MARKET UPDATE Q2 2021** **ALEXANDRIA/ARLINGTON**

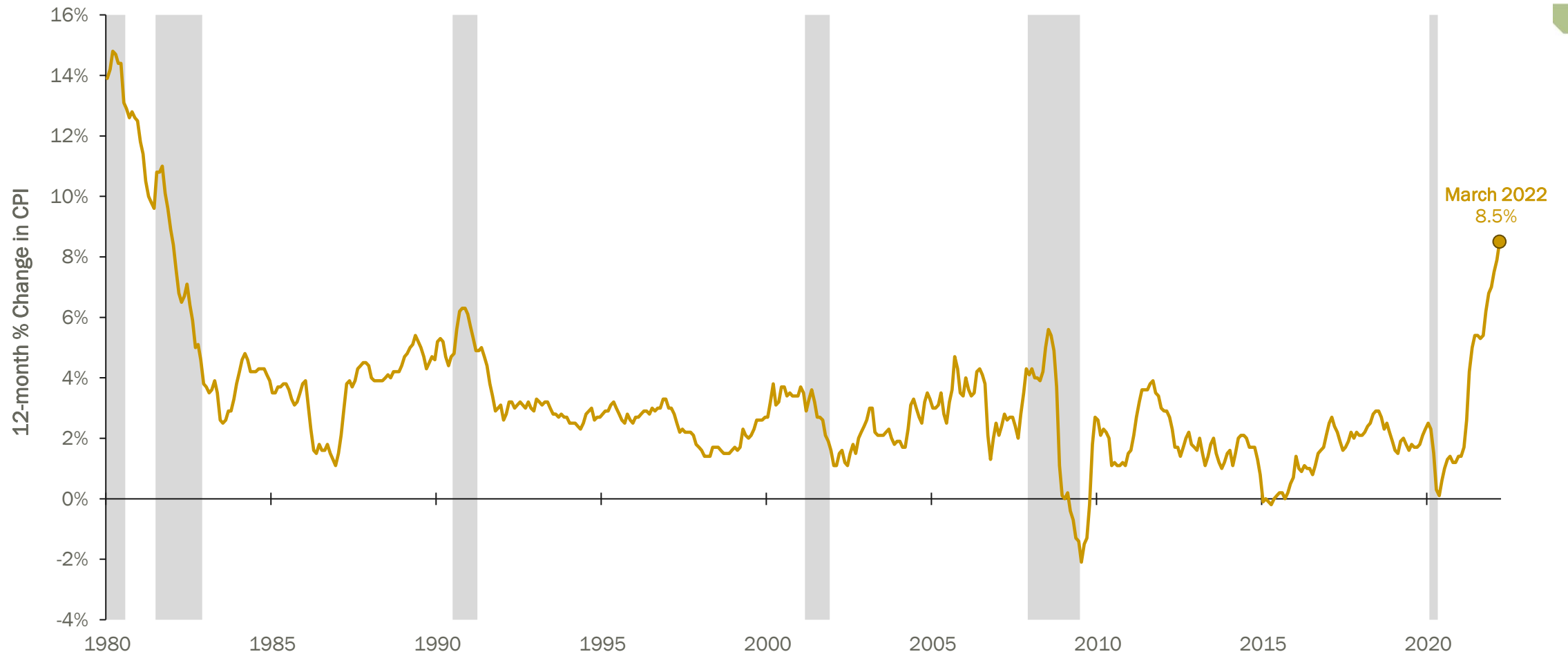
Tucker Plumlee

*Manager, Labor Market Research*

**NOVA** | Northern Virginia  
Community College

# PRICES & INFLATION

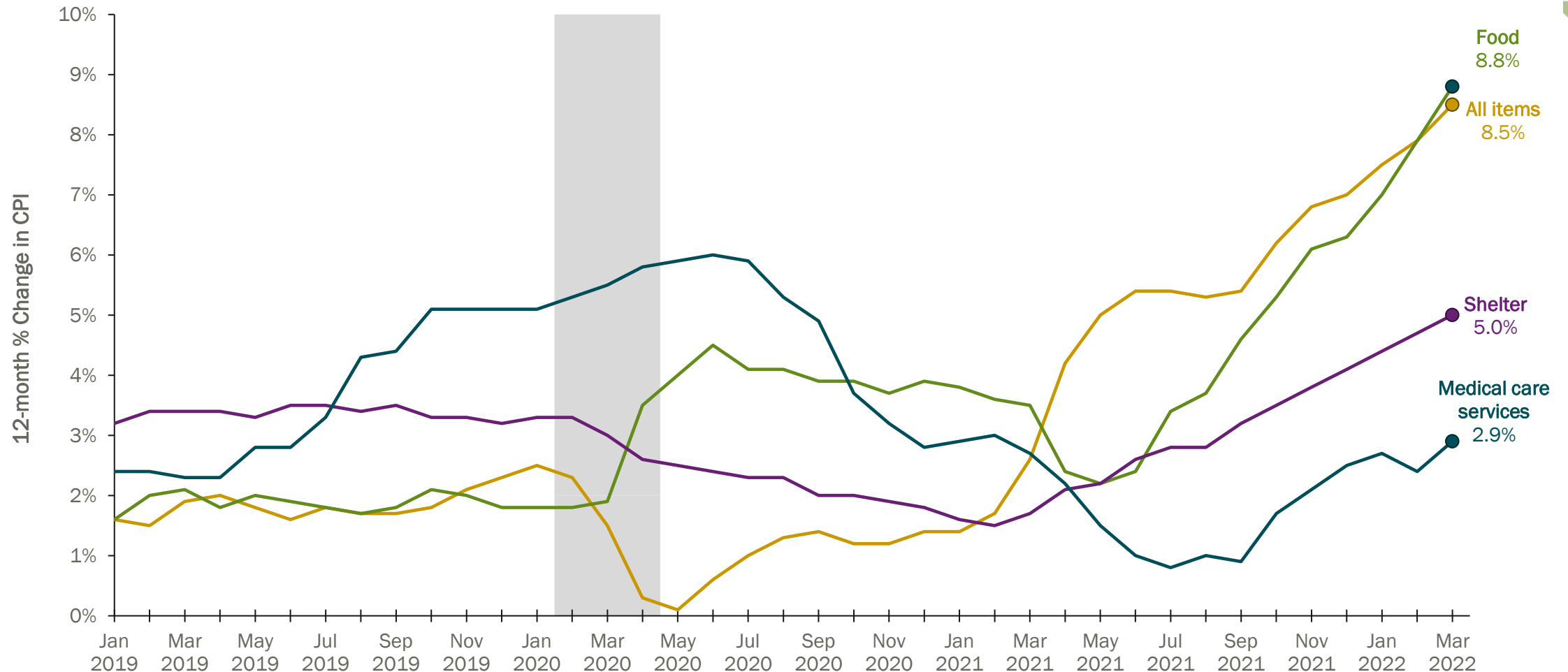
## Year-over-Year Change in Consumer Price Index, All Urban Consumers (National)



NOTE: Data is not seasonally adjusted. Shaded areas represent recessions as determined by the National Bureau of Economic Research  
Source: U.S. BLS, Consumer Price Index, April 18, 2022, <https://www.bls.gov/cpi/>.

# PRICES & INFLATION

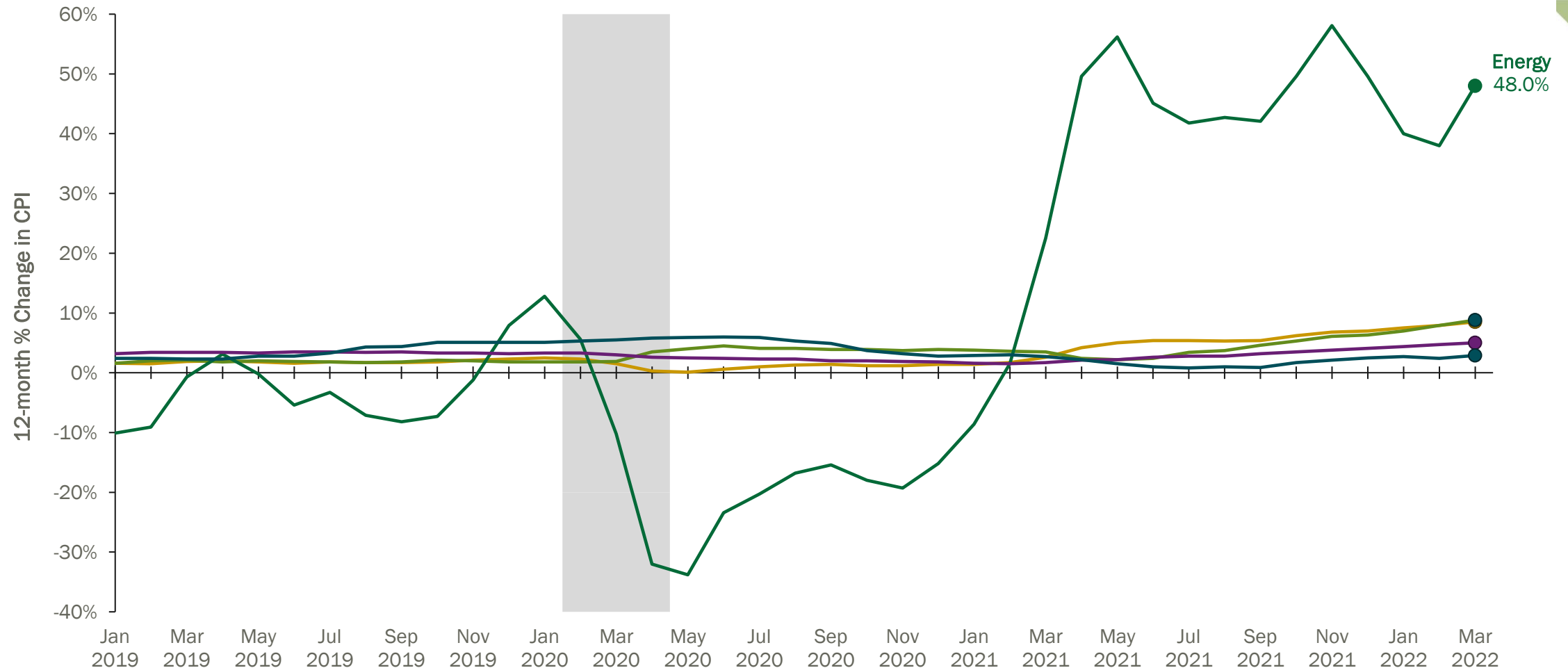
## Year-over-Year Change in Consumer Price Index, by Item (National)



NOTE: Data is not seasonally adjusted. Shaded areas represent recessions as determined by the National Bureau of Economic Research  
Source: U.S. BLS, Consumer Price Index, April 18, 2022, <https://www.bls.gov/cpi/>.

# PRICES & INFLATION

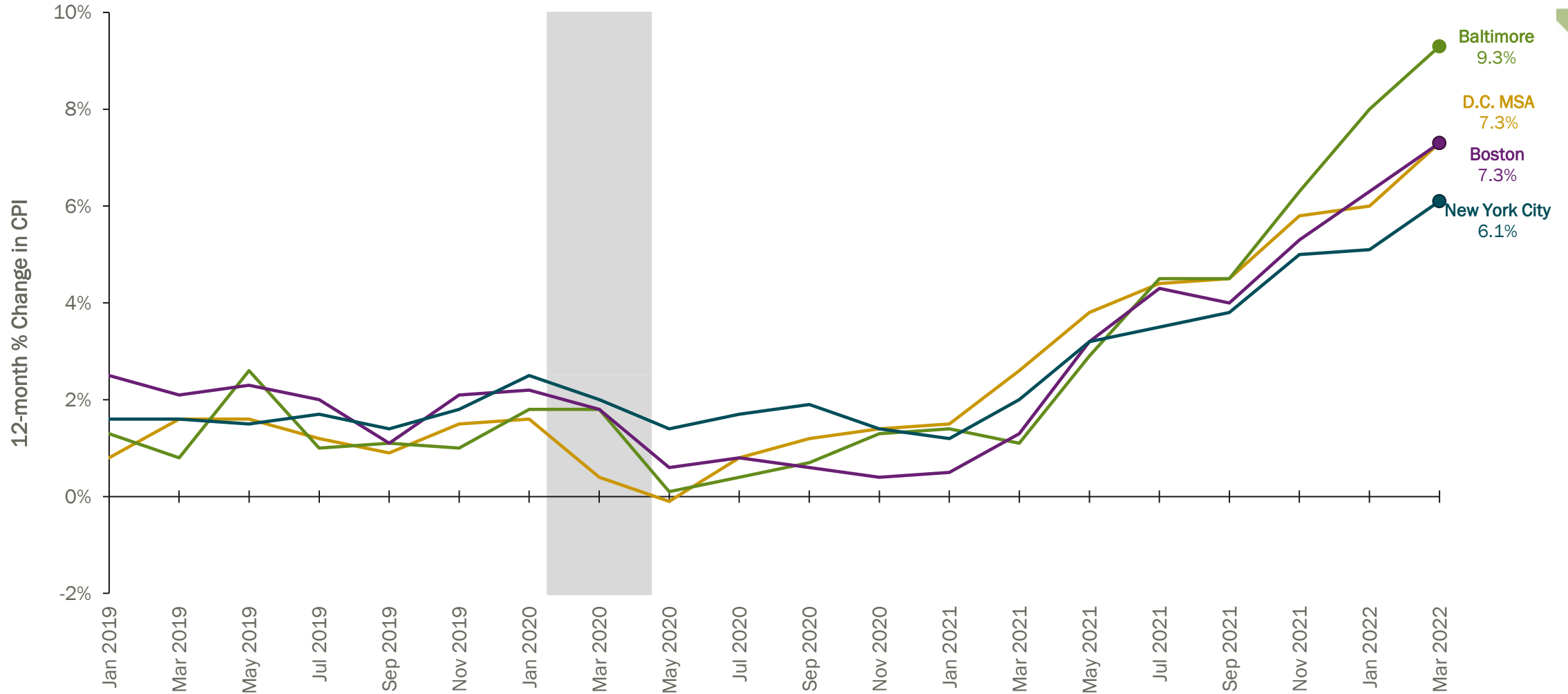
## Year-over-Year Change in Consumer Price Index, by Item (National)



NOTE: Data is not seasonally adjusted. Shaded areas represent recessions as determined by the National Bureau of Economic Research  
Source: U.S. BLS, Consumer Price Index, April 18, 2022, <https://www.bls.gov/cpi/>.

# PRICES & INFLATION

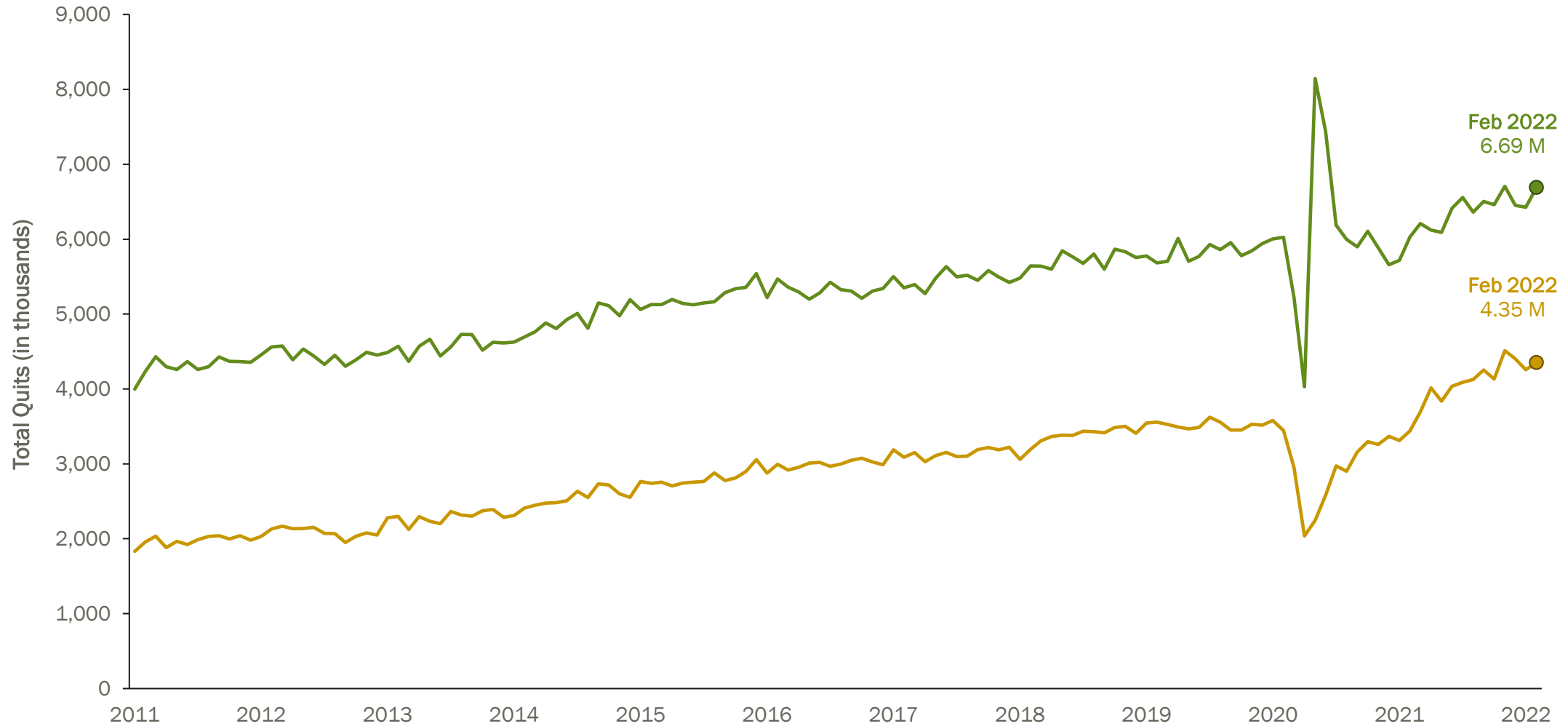
## Year-over-Year Change in Consumer Price Index, by MSA (National)



NOTE: Data is not seasonally adjusted. Shaded areas represent recessions as determined by the National Bureau of Economic Research  
Source: U.S. BLS, Consumer Price Index, April 18, 2022, <https://www.bls.gov/cpi/>.

# THE “GREAT RESIGNATION”

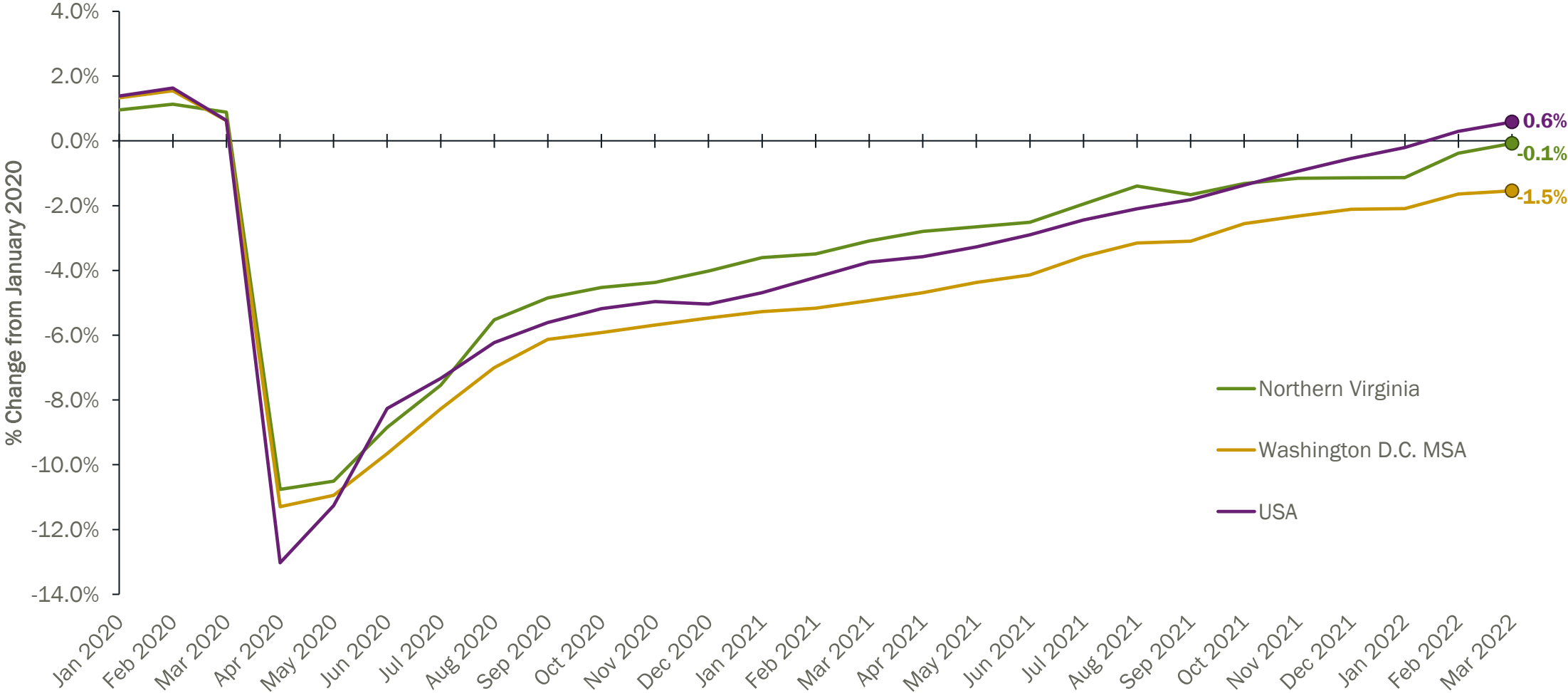
## Total Employees Quitting/Hired per Month (National)



NOTE: Data is seasonally adjusted.  
Source: U.S. BLS, Job Openings and Labor Turnover Survey, March 29, 2021, <https://www.bls.gov/jlt/>.

# EMPLOYMENT

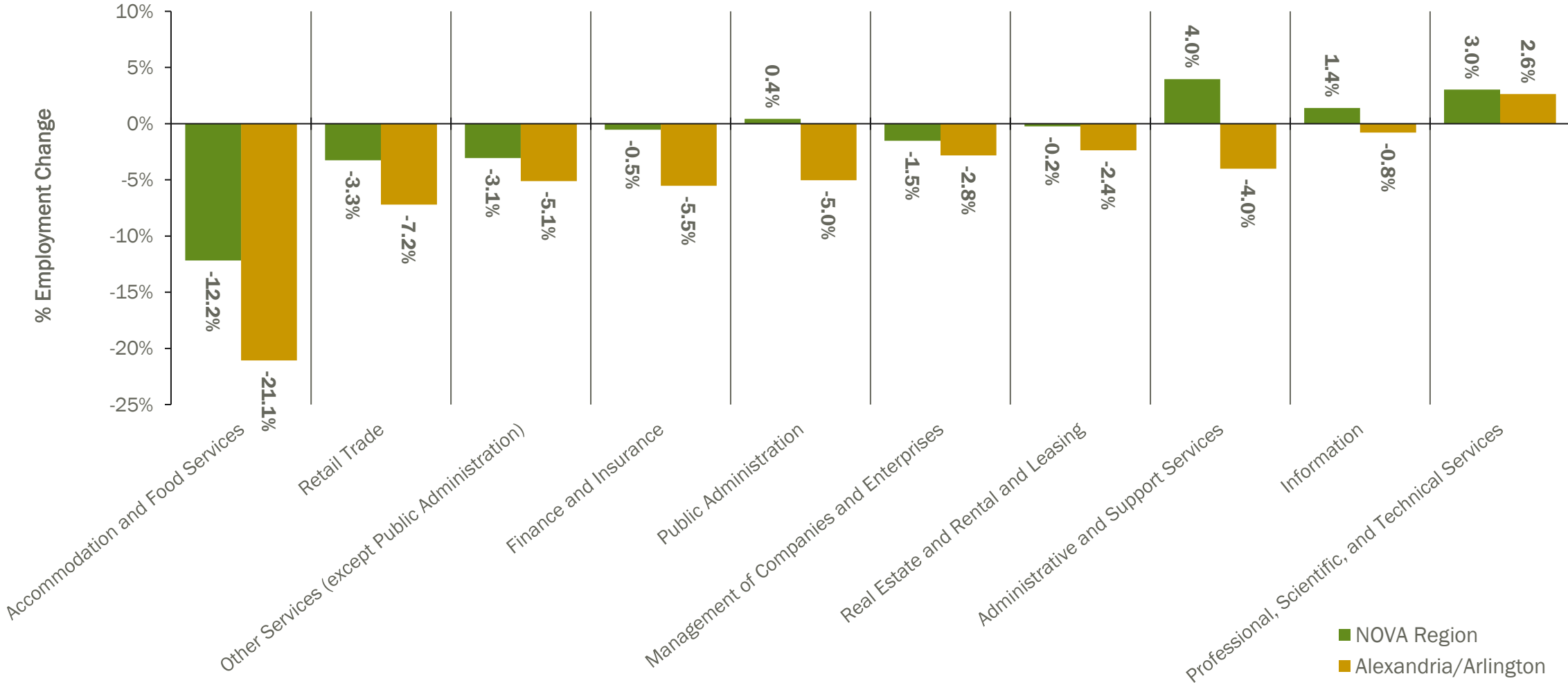
## Percentage Change in Total Employment from January 2020



NOTE: Total nonfarm employment, seasonally adjusted.  
 Source: U.S. BLS, Current Employment Statistics, April 15, 2021, <https://www.bls.gov/ces>.

# EMPLOYMENT

## Employment Change from Q1 2020 in Selected Sectors

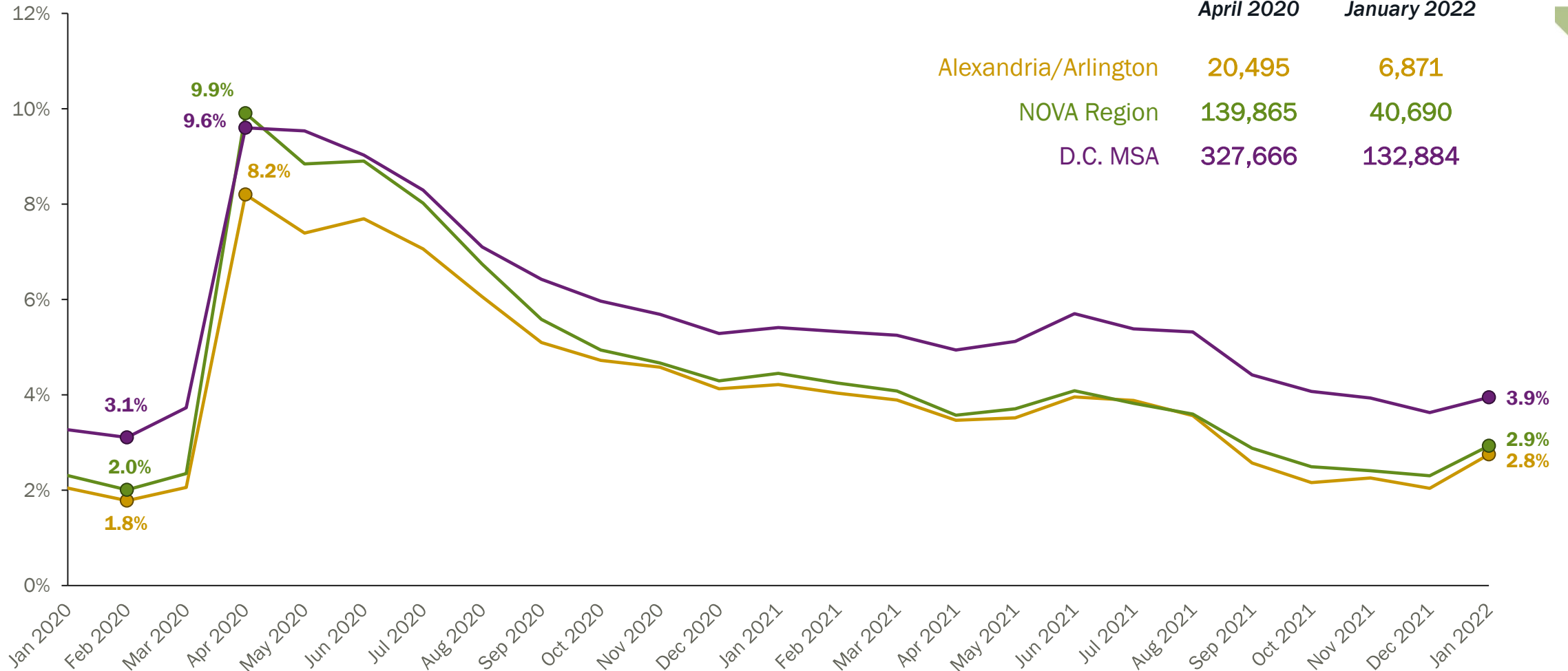


Source: U.S. BLS, Quarterly Census of Employment and Wages, Quarter 3, 2021, additional imputation by Chmura Economics, <https://www.chmura.com/software>.



# UNEMPLOYMENT

## Trend in Unemployment Rates



### Total Unemployed

	April 2020	January 2022
Alexandria/Arlington	20,495	6,871
NOVA Region	139,865	40,690
D.C. MSA	327,666	132,884

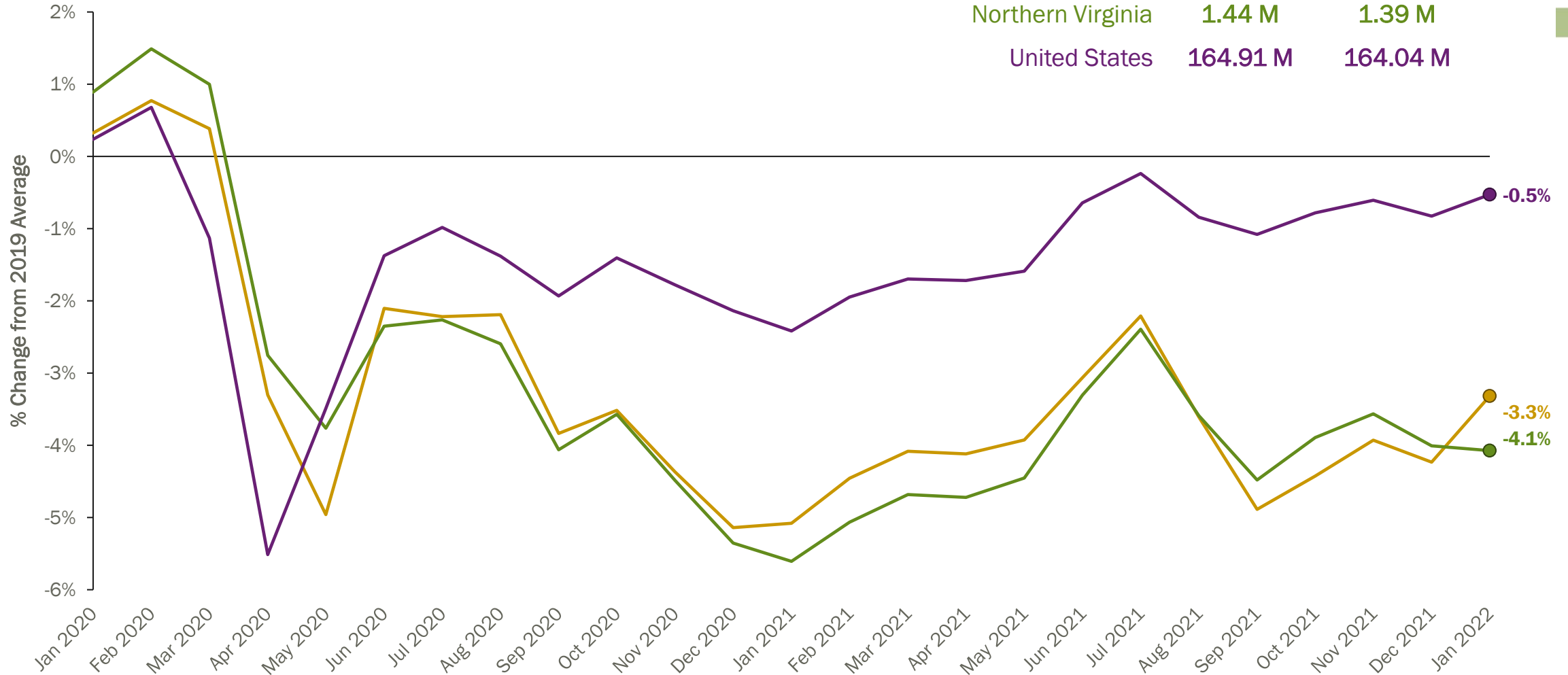
NOTE: Data is not seasonally adjusted.  
 Source: U.S. BLS, Local Area Unemployment Statistics, April 15, 2021, <https://www.bls.gov/lau>.

# LABOR FORCE

## Total Labor Force

### Labor Force Change from 2019 Average

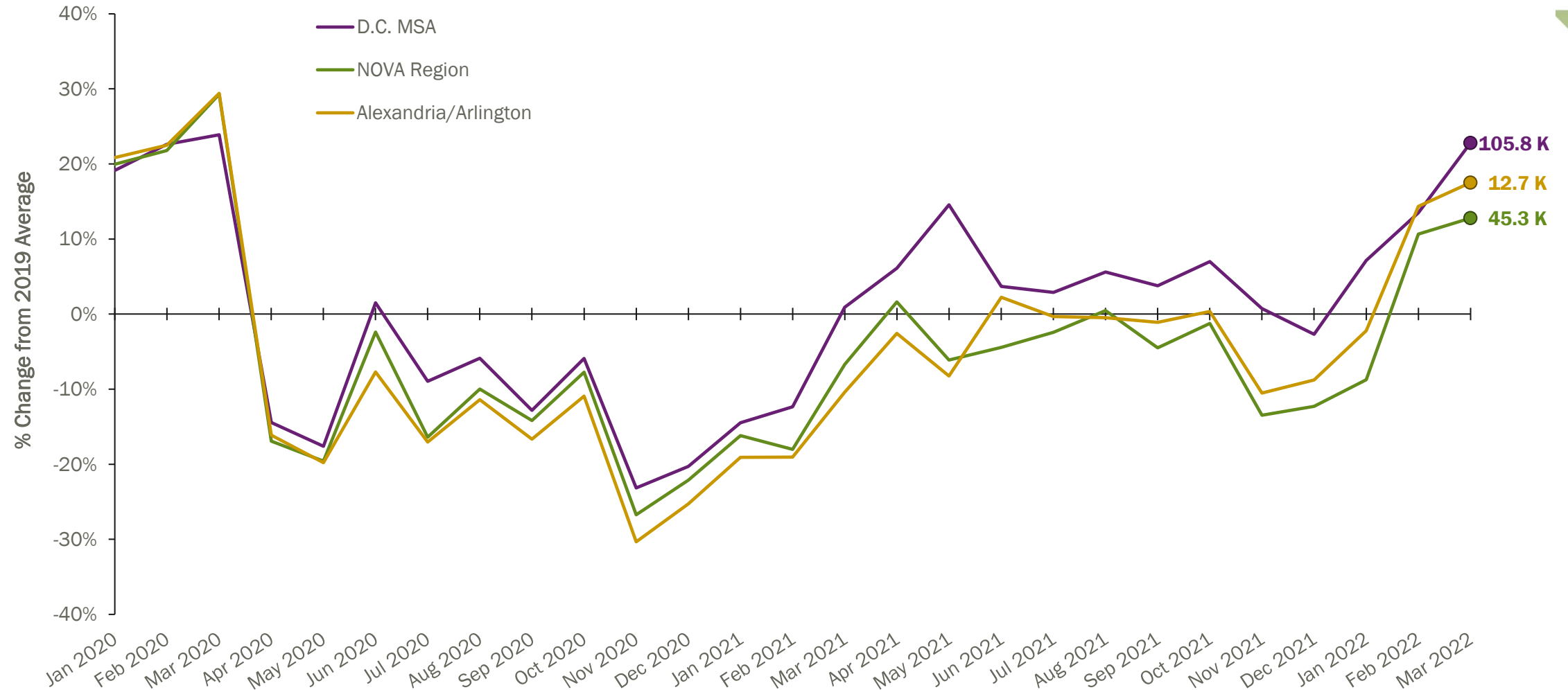
	2019 Average	January 2022
Alexandria/Arlington	258.4 K	249.8 K
Northern Virginia	1.44 M	1.39 M
United States	164.91 M	164.04 M



NOTE: Data is not seasonally adjusted  
 Source: U.S. BLS, Local Area Unemployment Statistics, April 15, 2021, <https://www.bls.gov/lau>.

# JOB POSTINGS

## Percentage Change in Total Postings from 2019 Average



Source: Burning Glass Technologies, Labor Insight, Monthly Job Postings Trends Report, April 14, 2022, <https://www.burning-glass.com/products/labor-insight>.



# QUESTIONS?

**Tucker Plumlee**

Manager, Labor Market Research

[tplumlee@nvcc.edu](mailto:tplumlee@nvcc.edu)

[www.nvcc.edu/lmi](http://www.nvcc.edu/lmi)