



LABOR MARKET UPDATE Q4 2021

ALEXANDRIA/ARLINGTON

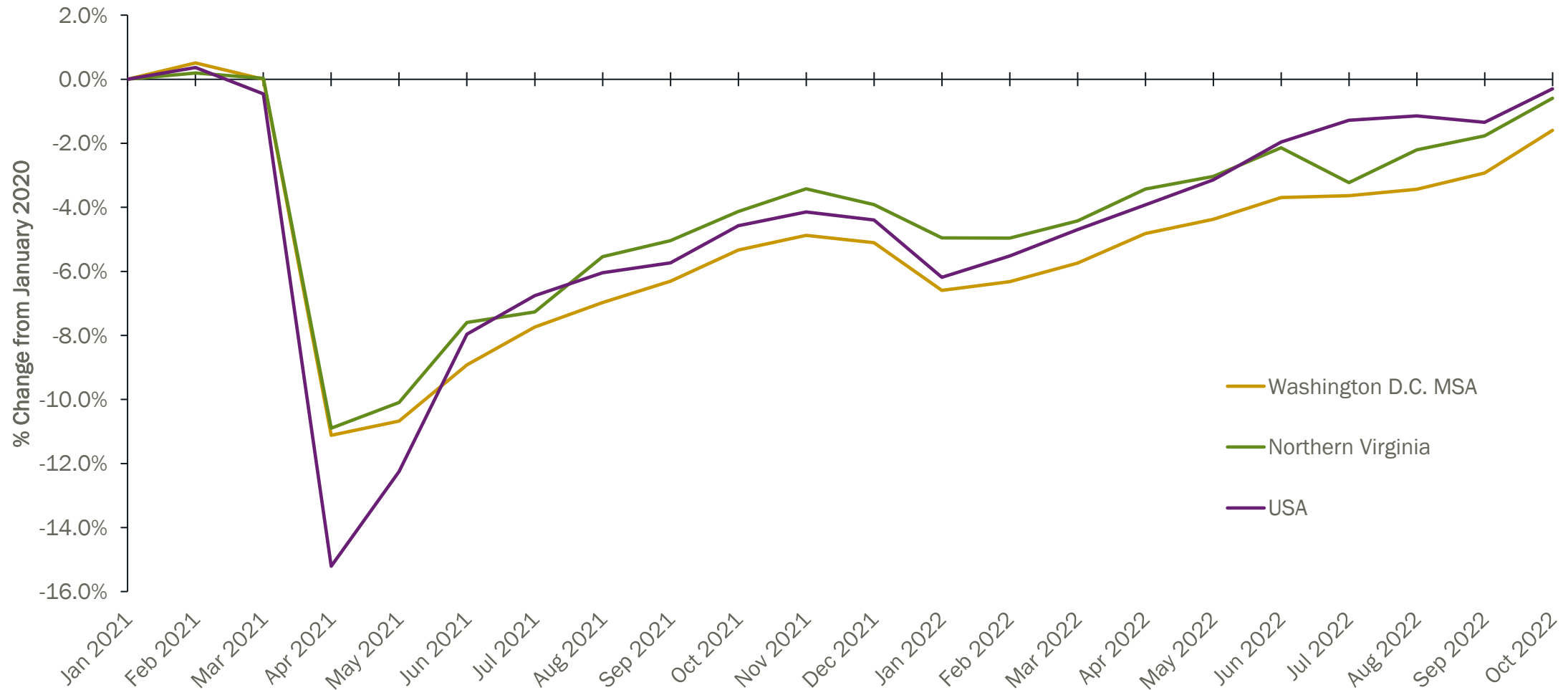
Tucker Plumlee

Manager, Labor Market Research

NOVA | Northern Virginia
Community College

EMPLOYMENT

Percentage Change in Employment from January 2020

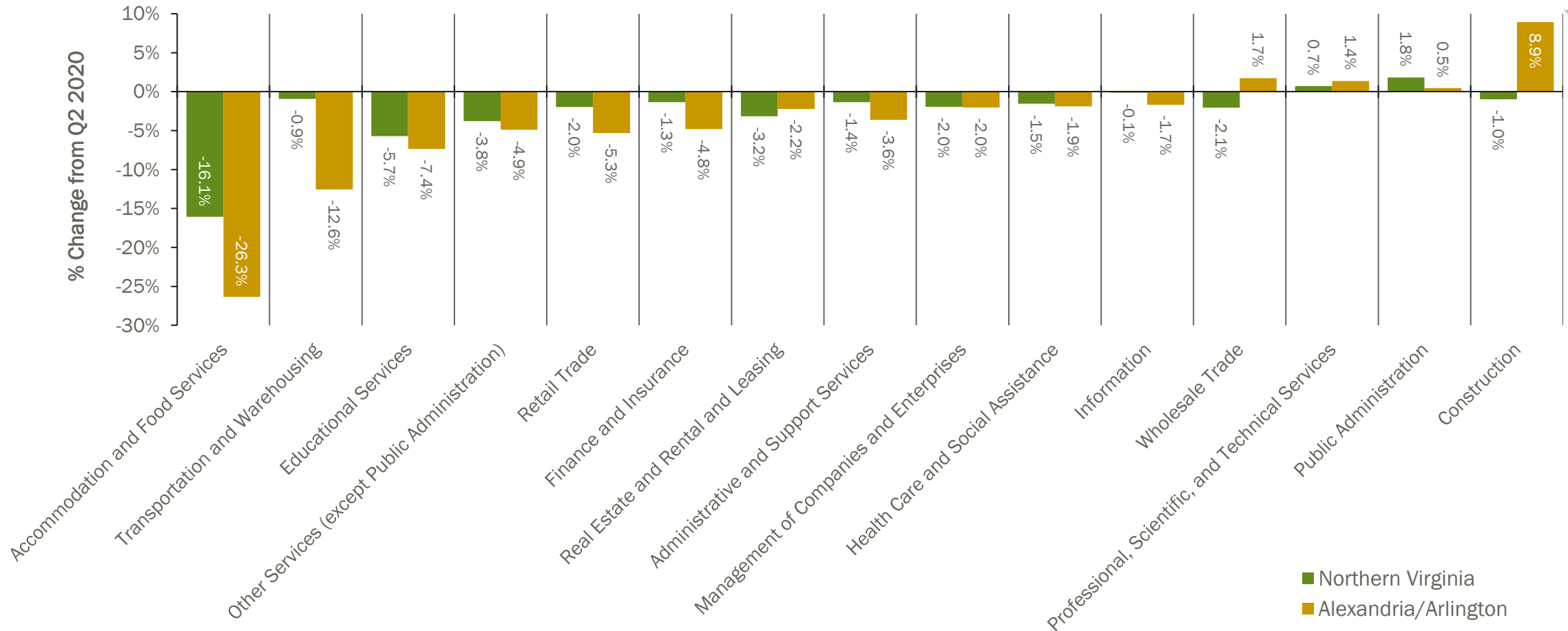


NOTE: Data is not seasonally adjusted.

Source: U.S. BLS, Current Employment Statistics, November 19, 2021, <https://www.bls.gov/ces>.

EMPLOYMENT

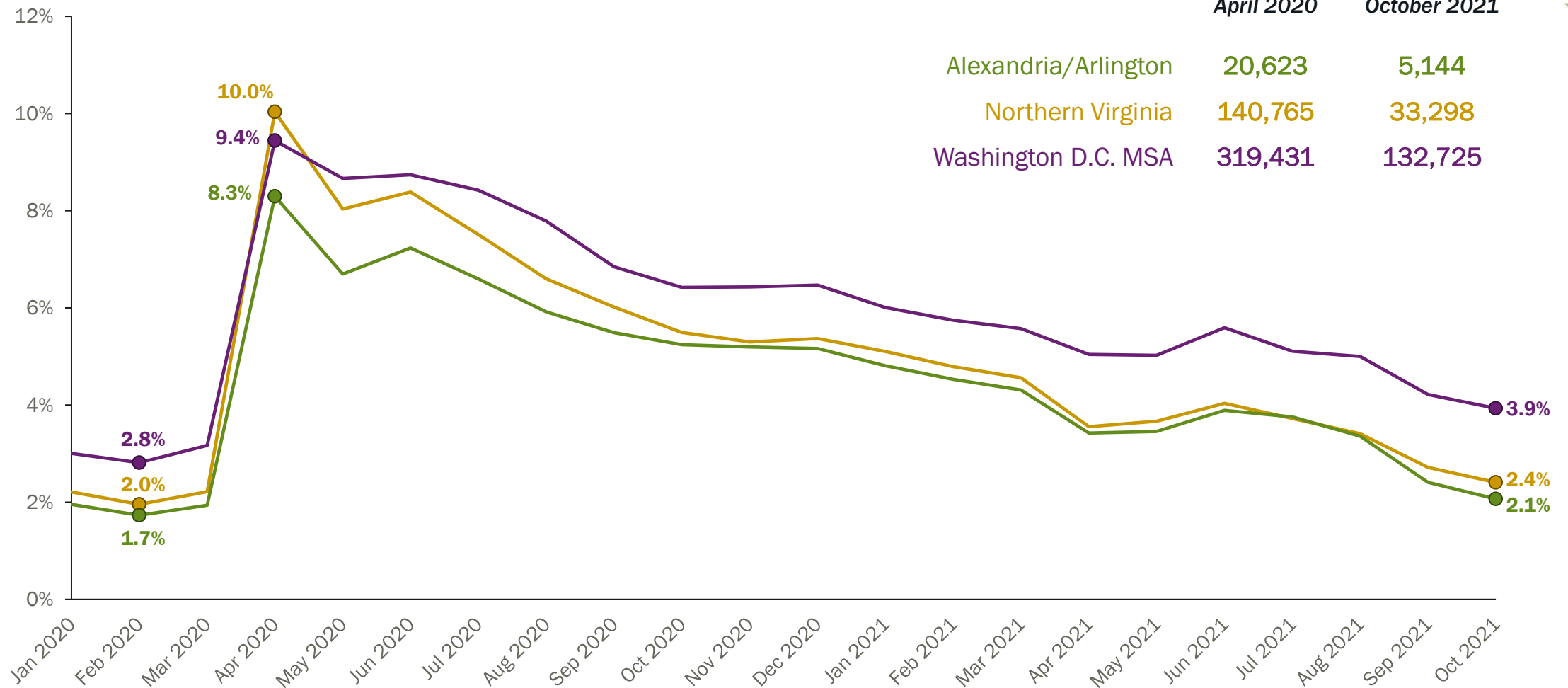
Over-the-Year Employment Change in Top 15 Sectors



Source: U.S. BLS, *Quarterly Census of Employment and Wages*, Quarter 2, 2021, additional imputation by Chmura Economics, <https://www.chmura.com/software>.

UNEMPLOYMENT

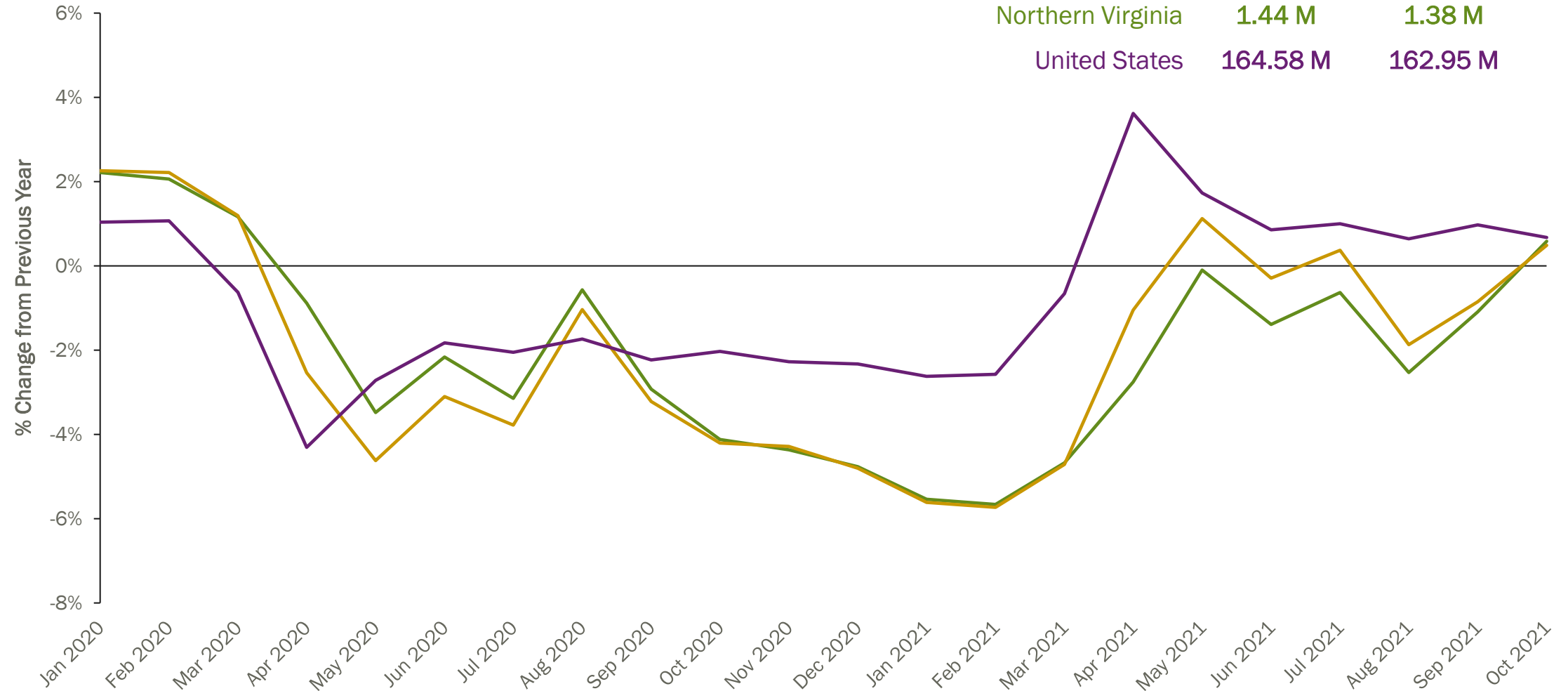
Trend in Unemployment Rates



NOTE: Data is not seasonally adjusted.
Source: U.S. BLS, Local Area Unemployment Statistics, December 2, 2021, <https://www.bls.gov/lau>.

LABOR FORCE

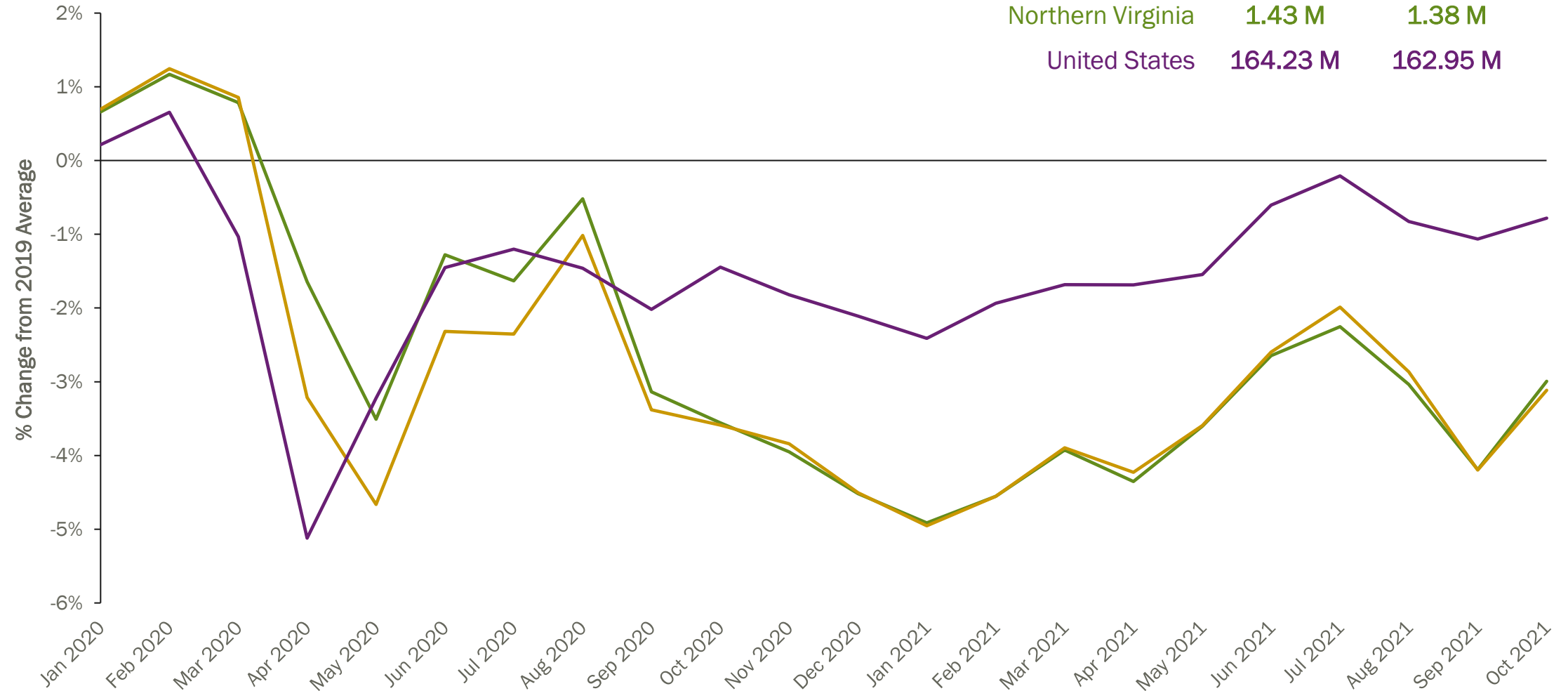
Over-the-Year Change in Labor Force



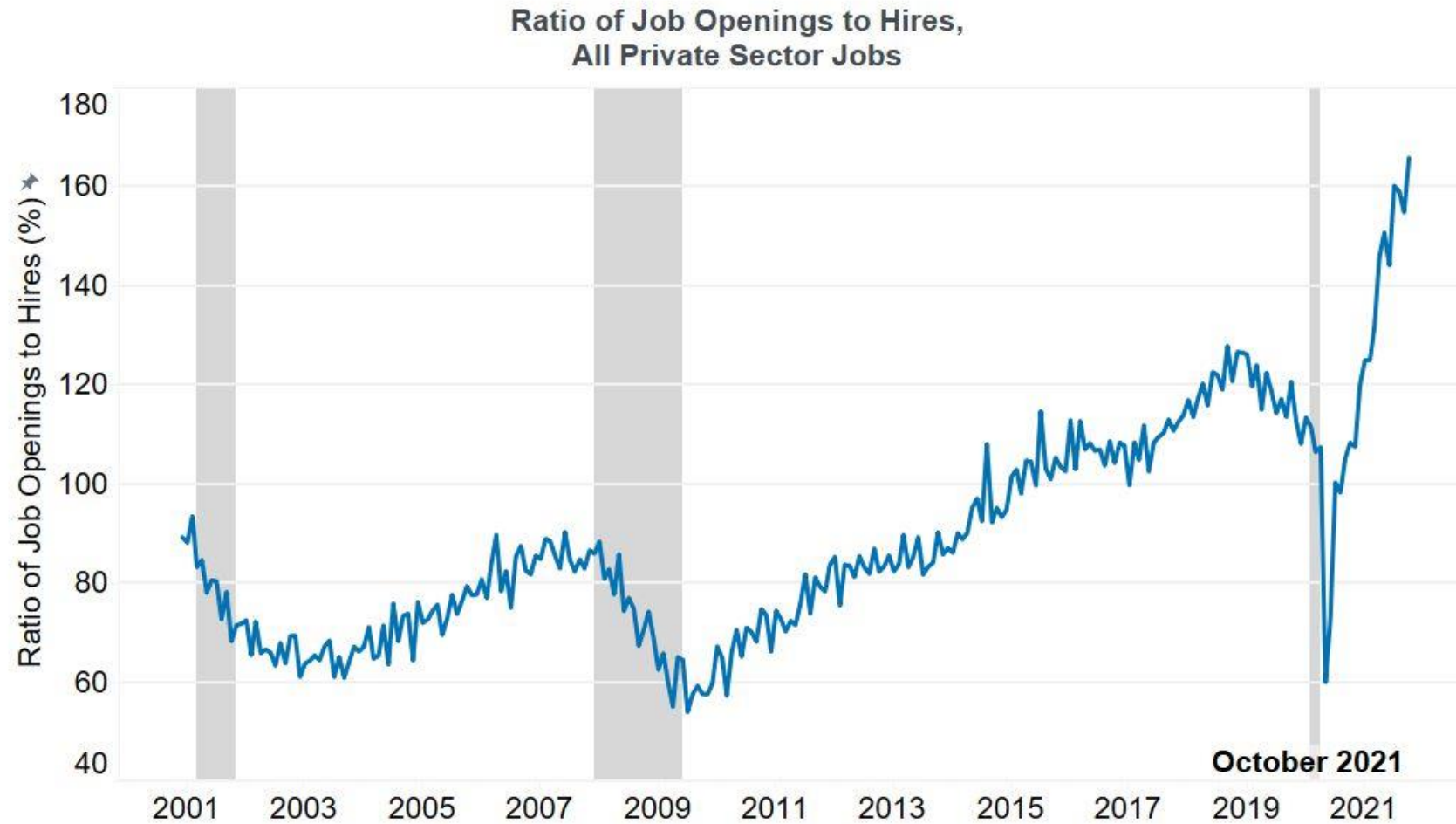
Source: U.S. BLS, Local Area Unemployment Statistics, December 2, 2021, <https://www.bls.gov/lau>.

LABOR FORCE

Labor Force Change from 2019 Average



JOB OPENINGS AND HIRES (NATIONAL)

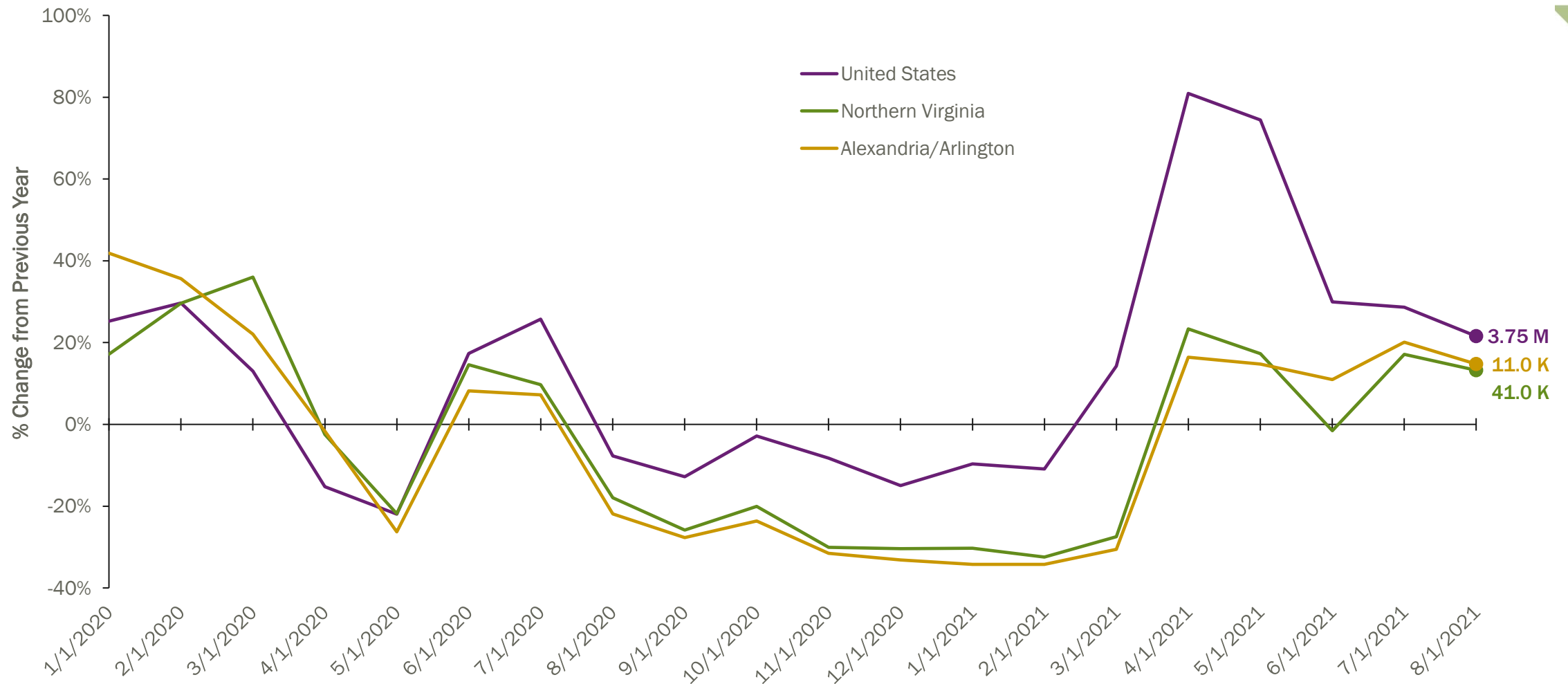


Source: The Conference Board; US Bureau of Labor..

© 2021 The Conference Board, Inc.

JOB POSTINGS

Percentage Change in Total Postings, Year-Over-Year



2021 NORTHERN VIRGINIA WORKFORCE INDEX



Our recent survey of nearly 100 regional business leaders found...

Top trends in hiring identified by respondents:



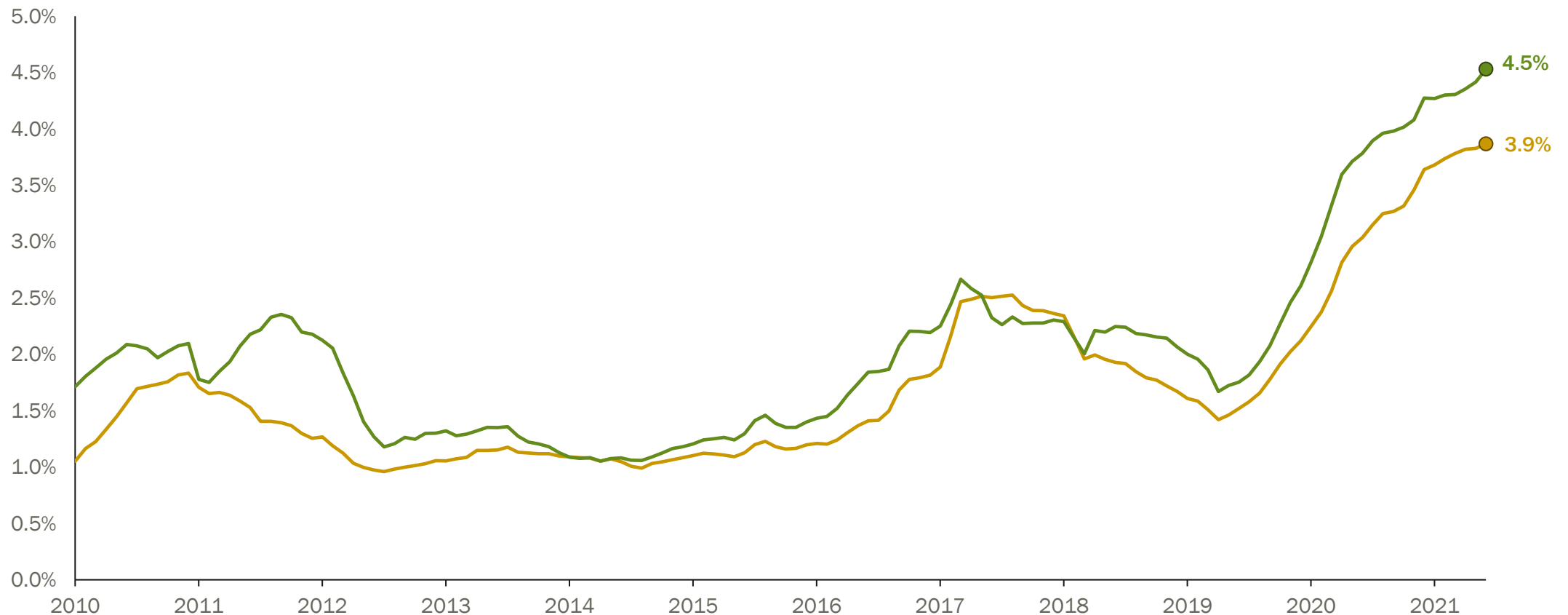
Our recent survey of nearly 100 regional business leaders found...

Top perks and benefits offered by respondents to increase employee retention:



REMOTE WORK TRENDS – JOB POSTINGS

Percentage of Total Job Postings Mentioning Remote Work (12-mo. moving average)



Source: Burning Glass Technologies, Labor Insight, *Monthly Job Postings Trends Report*, December 15, 2021, <https://www.burning-glass.com/products/labor-insight>.

TOP EMPLOYERS HIRING FOR REMOTE WORK IN NOVA

Employer	Business Type	Remote Work Postings (past 12 months)	% of Total Postings
General Dynamics	Aerospace, defense and IT contracting	901	19.4%
Navy Federal Credit Union	Finance and banking	837	63.1%
Anthem Blue Cross	Health insurance	394	11.1%
K12 (Stride, Inc.)	Online education design and management	384	60.0%
Northrop Grumman	Aerospace and defense contracting	383	10.8%
SAIC	IT support and contracting	372	11.2%
Cognosante	Health IT services	367	55.8%
Assurance	Insurance, employee benefits, retirement services	300	71.4%
CACI	Professional services & IT contracting	273	5.9%
Raytheon	Defense contracting	249	12.5%
Leidos	Aerospace, defense and IT contracting; biomedical research	229	3.2%
UnitedHealth Group	Health insurance	218	69.6%
MasterCard Worldwide	Financial services	193	100.0%
Verizon	Telecommunications	168	13.4%
U.S. Government	Federal departments and agencies	137	8.5%

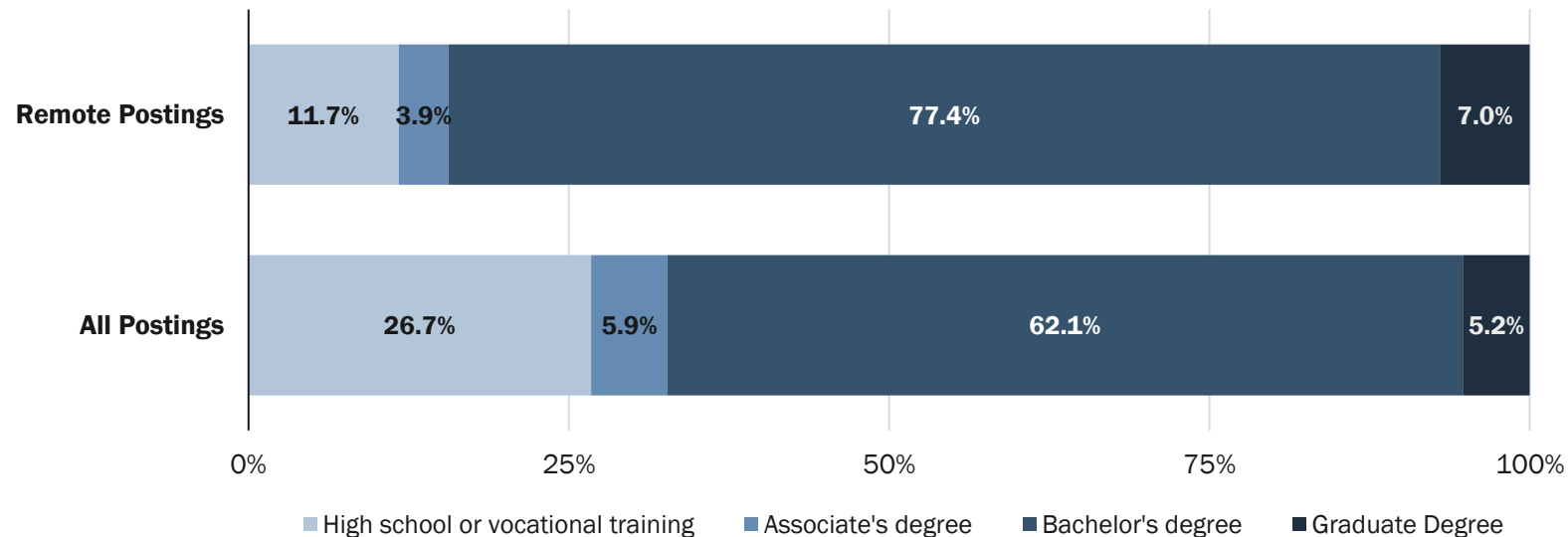
Source: Burning Glass Technologies, Labor Insight, *Employers Report*, December 15, 2021, <https://www.burning-glass.com/products/labor-insight>.

OCCUPATIONS WITH HIGHEST CONCENTRATION OF REMOTE POSTINGS

Occupation	Total Job Postings (past 12 months)	% of Total Postings Mentioning Remote Work
Life / Health Insurance Sales Agent	1,271	36.9%
Computer Scientist / Researcher	452	9.5%
Programmer / Analyst	828	8.2%
Java Architect	3,152	7.4%
Math Teacher	577	7.3%
Contracts Manager	575	7.1%
Insurance Sales Agent (General)	1,193	6.8%
Insurance Customer Service Representative	2,510	6.4%
Risk Analyst	645	6.2%
Science Teacher	1,724	6.0%
Financial Services Representative	4,631	5.7%
Mortgage Loan Officer	29,397	5.6%
English / Language Arts Teacher	402	5.5%
Financial Planning Manager	1,313	5.4%
Software QA Lead	803	5.1%

Source: Burning Glass Technologies, Labor Insight, *Specialized Occupation Report*, December 15, 2021,
<https://www.burning-glass.com/products/labor-insight>.

MINIMUM EDUCATION REQUESTED IN JOB POSTINGS (LAST 12 MONTHS)



Source: Burning Glass Technologies, Labor Insight, *Specialized Occupation Report*, December 15, 2021,
<https://www.burning-glass.com/products/labor-insight>.

NOVA | Northern Virginia
Community College

Bloomberg
**Remote Work Is Crushing Low-Skilled
Left Behind in U.S Cities**

By Michael Sasso
September 1, 2021, 5:43 PM EDT



QUESTIONS?

Tucker Plumlee

Manager, Labor Market Research

tplumlee@nvcc.edu

www.nvcc.edu/Imi